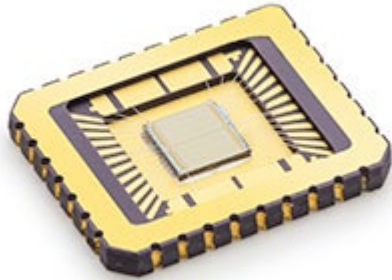




RELIABLE. IN ALL RESPECTS.

**SRAMs, EEPROMs, LOGICs**



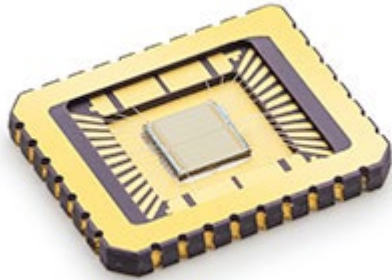


## SRAM MIL-STD-883

---

Our High Speed and Low Power SRAM Product Line designed for the Industrial and Military markets includes small and medium density SRAMs from 1 Kb to 4 Mb. Built in CMOS technology, our SRAMs have fully TTL Compatible Inputs and Outputs.

They are available with 1 to 16 bits data bus width, up to 12 ns access time and can feature special functions such as Separate I/O, Fast CS and OE controls, Chip Clear, Transparent Write, Tristate Write, Cache Tag (OD).



## SRAM MIL-STD-883

---

Commercial (0°C/+70°C), Industrial (-40°C/+85°C) and Mil-temp (-55°C/+125°C) temperature range are available.

Devices are offered in a number of different plastic and hermetic ceramic packages. If needed, packages modifications can be made available on demand.



## SRAM MIL-STD-883

	Description	SMD 5962-	Part #	TAA (ns)	Packages/Pins			
					DIP	LCC	FP	SOJ
1K	256x4	88594	P4C422	15/20/25/35	22	24	24	
		88594	P4C423	15/20/25/35	24			
		88594	P93U422	35	22	24	24	
4K	4Kx1	88587	P4C147	15/20/25/35	18	18	18	
	1Kx4, Common I/O	87513	P4C148	15/20/25/35	18	18		
	1Kx4, Common I/O, Fast CS		P4C149	15/20/25/35	18	18		
	1Kx4, Separate I/O and Chip Clear	88588	P4C150	15/20/25/35	24	28	24	
16K	16Kx1	1529	P4C167	15/20/25/35/45	20	20		
		84132	P4C167	15/20/25/35/45	20	20		
	4Kx4, Common I/O	86705	P4C168	20/25/35/45/55/70	20	20	20	
	4Kx4, Common I/O, Fast CS		P4C169	20/25/35/45/55/70	20			
	4Kx4, Common I/O, Fast CS and OE		P4C170	20/25/35/45/55/70	20			
	4Kx4, Separate I/O, Transparent Write		P4C1681	20/25/35	24	28	24	
	4Kx4, Separate I/O, Tristate Write	88611	P4C1682	20/25/35	24	28	24	
	4Kx4, Separate I/O, Tristate Write	89790	P4C1682	20/25/35	24	28	24	
	2Kx8, Common I/O	84036 (not 5962-84036)	P4C116	15/20/25/35	24	24/28/32/40	24	
		88740	P4C116	15/20/25/35	24	24/28/32/40	24	
		89690	P4C116	15/20/25/35	24	24/28/32/40	24	
	256x4	88594	P4C422	15/20/25/35	22	24	24	



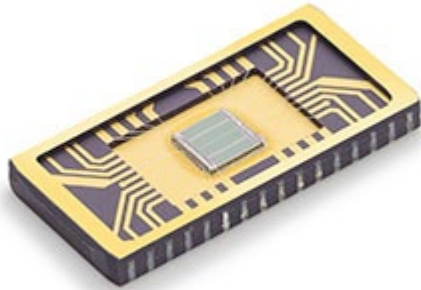
## SRAM MIL-STD-883

	Description	SMD 5962-	Part #	TAA (ns)	Packages/Pins			
					DIP	LCC	FP	SOJ
65K	64Kx1	89696	P4C187	15/20/25/35/45/55/70/85	22	22/28		
	64Kx1	86015	P4C187	15/20/25/35/45/55/70/85	22	22/28		
	16Kx4, Common I/O	86859	P4C188	15/20/25/35/45	22	22		
	16Kx4, Common I/O	89692	P4C188	15/20/25/35/45	22	22		
	16Kx4, Common I/O, OE	86859	P4C198	15/20/25/35/45	24	28		
	16Kx4, Common I/O, OE	89892	P4C198	15/20/25/35/45	24	28		
	16Kx4, Common I/O, OE and CE2	86859	P4C198A	15/20/25/35/45	24	28		
	16Kx4, Common I/O, OE and CE2	89891	P4C198A	15/20/25/35/45	24	28		
	16Kx4, Separate I/O, Transparent Write	90594	P4C1981	15/20/25/35/45	28	28	28	
	16Kx4, Separate I/O, Tristate Write	89712	P4C1982	15/20/25/35/45	28	28	28	
	8Kx8	38294	P4C164	12/15/20/35/45/70/100	28	28	28	
	8Kx8	85525	P4C164	12/15/20/35/45/70/100	28	28	28	
	8Kx8	89691	P4C164	12/15/20/35/45/70/100	28	28	28	
	8Kx8, Cache Tag (OD)		P4C174	15/20/25	28			
72K	8Kx9	88683	P4C163	25/35/45	28	28	28	
	8Kx9	89883	P4C163	25/35/45	28	28	28	



## SRAM MIL-STD-883

	Description	SMD 5962-	Part #	TAA (ns)	Packages/Pins			
					DIP	LCC	FP	SOJ
256K	32Kx8, 5V	88662	P4C1256	20/25/35/45/55/70	28	28/32	28	
	32Kx8, 5V, Low Power	88552	P4C1256L	20/25/35/45/55/70	28	28/32	28	
	64Kx4, 5V, Common I/O, CE	88681	P4C1258	15/20/25/35	24	28	28	24
	64Kx4, 5V, Common I/O, CE, Low Power	88545	P4C1258L	35/45/55/70	24	28	28	
	64Kx4, 5V, Common I/O, CE and OE	89524	P4C1298	15/20/25/35/45	28	28		28
	64Kx4, 5V, OE, 2 CE		P4C1299	15/20/25/35/45	28	28		28
	64Kx4, 5V, Separate I/O, Transparent Write	90664	P4C1281	12/15/20/25/35/45	28	28		
	64Kx4, 5V, Separate I/O, Tristate Write	89935	P4C1282	12/15/20/25/35/45	28	28		28
	256Kx1, 5V	88725	P4C1257	25/35/45/55/70	24	28	28	
	256Kx1, 5V, Low Power	88544	P4C1257L	35/45/55/70	24	28	28q	
1M	128Kx8, 5V, 2 CE	89598	P4C1024	20/25/35/45/55/70/85/100/120	32	32	32	32
	128Kx8, 5V, Low Power, 1 CE	89598	P4C1023	20/25/35/45/55/70	32			32
	256Kx4, 5V, 1 CE	91612	P4C1026	20/25/35	28	32		28
4M	512Kx8, 5V	95600	P4C1049	20/25/35/45/55/70		36	36	36
	512Kx8, 5V, Low Power		P4C1048L	70/100	32			

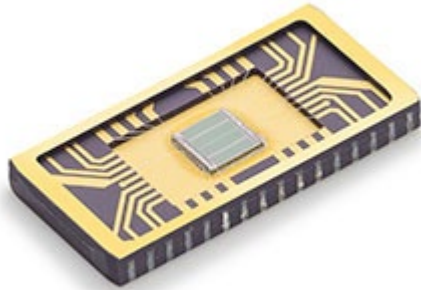


## EEPROM

---

Designed to ensure the data retention and the secure and safe boot of your systems, our EEPROM Product Line includes small and medium density EEPROM from 16 Kb to 1 Mb for the Industrial and Military markets.

Our EEPROM have fully TTL and/or CMOS Compatible Inputs and Outputs They are available in the Mil-temp (-55°C/+125°C) temperature range with 8 bits data bus width, up to 120 ns access time and feature special functions such as Software Data Protection.



## EEPROM

---

Depending on the product, the Endurance ranges from 10,000 to 100,000 Write Cycles and 10-Years and 100-Years Data Retention features are available. Industrial devices are offered in a number of different plastic packages.

MIL-STD-883 compliant devices are offered in hermetic ceramic packages to maintain the longevity of your legacy military embedded systems.

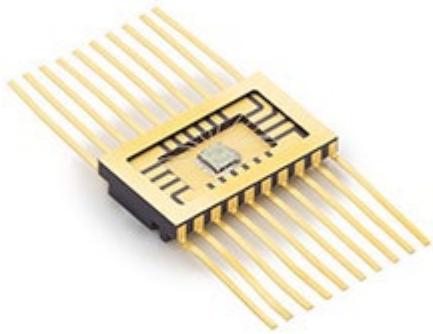
If needed, packages modifications can be made available on demand.





## EEPROM

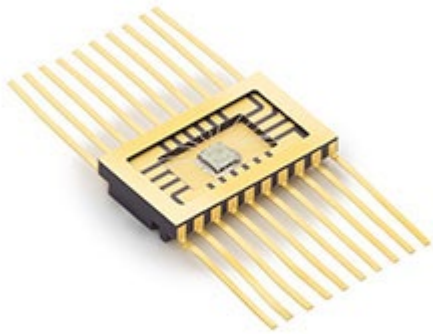
	Description	SMD 5962-	Part #	TAA (ns)	Packages/Pins		
					DIP	SOJ	SOIC/SOP
16K	2Kx8 EEPROM		PYA28C16 - No longer available	120/150/200/250	24	32	
	2Kx8 EEPROM		PYA28C16B	150/200/250/350	24	32	
64K	8Kx8 EEPROM	87514	PYX28C64	200/250/300/350	28	32	
	8Kx8 EEPROM (High Speed)	87514	PYX28HC64	70/90/120	28	32	
	8Kx8 EEPROM	87514	PYA28C64 - No longer available	150/200/250/300	28	32	
	8Kx8 EEPROM	87514	PYA28C64B	150/200/250/300	28	32	
256K	32Kx8 EEPROM		PYA28C256	150/200/250/300	28	32	
	32Kx8 EEPROM (High Speed)		PYA28HC256	70/90/120	28	32	
1M	128Kx8 EEPROM		PYA28C010	120/150/200/250	32	32	32



## LOGIC FCT AND FCT-T

Our Logic Devices Product Line consists of 45 functions including Octal line drivers, Octal Bi-directional Bus transceivers and Latches that are used on every embedded system boards for High speed and High-current Drive Bus Interface Applications.

Based on a Proprietary chip design, our logic functions are Built with High-speed Fast CMOS Technology and are available in FCT and FCT-T versions.



## LOGIC FCT AND FCT-T

---

A total of 62 SMD Numbers are presently supported and include popular ICs such as the 240, 241, 244, 245, 273 and 645.

MIL-STD-883 compliant devices are offered in various hermetic ceramic packages to maintain the longevity of your legacy military embedded systems.

If needed, package modifications or custom functions can be made available on demand..



## LOGIC FCT AND FCT-T

Function	Description	FCT SMD#	FCT-T SMD#
138	1 of 8 Decoder	5962-87654	5962-92233
139	Dual 1 of 4 Decoder		5962-92202
161	Synchronous Presettable 4-Bit Binary Counter w/ Asynchronous Reset	5962-88640	
163	Synchronous Presettable 4-Bit Binary Counter w/ Synchronous Reset	5962-88657	5962-92210
240	Inverting Octal Buffer	5962-87655	5962-92213
241	Non-Inverting Octal Buffer w/ 3-State Outputs	5962-89732	
244	Non-Inverting Octal Buffer	5962-87630	5962-92203
245	Non-Inverting, Octal Transceiver w/ 3-State Output	5962-87629	5962-92214
273	Octal D Flip Flop w/ Master Reset	5962-87656	5962-92215
373	Octal Non-Inverting Latch w/ Transparent 3-State Outputs	5962-87644	5962-92217
374	Octal D Flip Flop w/ Output Enable	5962-87628	5962-92218
377	Octal D Flip Flop w/ Clock Enable	5962-87627	5962-92219
521	8-bit Identity Comparator	5962-88543	5962-92234
533	Octal Transparent Latch w/ Inverted 3-State Outputs	5962-88651	
540	Inverting Octal Buffer w/ 3-State Outputs	5962-89767	5962-92220



## LOGIC FCT AND FCT-T

Function	Description	FCT SMD#	FCT-T SMD#
541	Octal w/ 3-State Output	5962-89766	5962-92237
543	Non-Inverting, Registered, Octal	5962-89730	5962-92221
573	Octal Transparent w/ Flow-Thru Pin-out and 3-State Outputs	5962-88639	5962-92238
574	Octal D Flip Flop w/ Flow-Thru Pinout	5962-89513	5962-92222
640	Inverting Octal Transceiver w/ 3-State Outputs	5962-88654	
645	Non-Inverting Octal transceiver w/ 3-State Outputs	5962-88653	5962-92244
646	Non-Inverting Octal Registered Transceiver w/ 3-State Outputs		5962-92223
821	10-Bit Non-Inverting Buffered Bus Interface	5962-88608	5962-92225
823	9-Bit Non-Inverting Buffered Bus Interface	5962-88656	
827	10-Bit Non-Inverting Buffered Bus Interface	5962-89506	5962-92247





RELIABLE. IN ALL RESPECTS.

# Thank you for your attention

---

**You need more information? Contact us!**

 +49 2722 6373 - 0

 [info@msa-components.com](mailto:info@msa-components.com)

 [www.msa-components.com](http://www.msa-components.com)